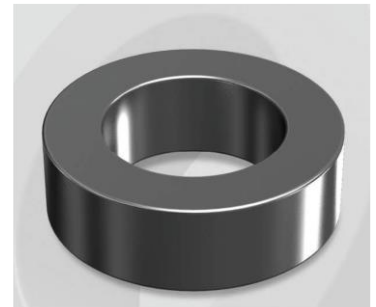


CM172125G

OD : 172

Electrical Characteristics

Material	Permeability (μ)	AL \pm 8% (nH/N ²)	DCB (% min) @ 20 Oe	Coreloss (mW/cm ³ , max) @50kHz, 1000G
MPP	125	89	80.04	290



Core Dimensions

Dimensions		Uncoated		Coated		Color	Packaging
		(mm)	(inch)	(mm)	(inch)		
OD	(Max)	17.27	0.680	18.03	0.710	Black	Box Qty = 1,960 pcs
ID	(min)	9.65	0.380	9.02	0.355		
HT	(max)	6.35	0.250	7.11	0.280		

Physical Characteristics

Cross Section (A)	Path Length (l)	Window Area (Wa)	Volume (V)	Breakdown Voltage (Vac)
0.232 cm ²	4.14 cm	0.638 cm ²	0.9605 cm ³	1,000
0.0360 in ²	1.63 in	125,913 cmil	0.05861 in ³	

Winding Information

0% Winding length/turn (cm)		
2.323		
40% winding factor Surface Area (cm ²)		
13.91		
40% Wound Di.(mm)		
OD	ID	HT
20.24	5.90	9.77

Typical DC Bias Performance

